

NOTES

1. DO NOT SCALE FROM THIS DRAWING
2. REFER TO DWGS No STN029-CHU-010, 011, 012 & 014

FINISHES

ROOF
KALZIP RIBBED PANELS - FINISH TO BE STANDARD STUCCO
EMBOSSED NATURAL ALUMINIUM

WALLS
FACING BRICK CLASS FN TO MATCH EXISTING

MESH- ON 3/19 STAINLESS STEEL MESH BY POTTER & SOAR
CONSTRUCTION APPROVED

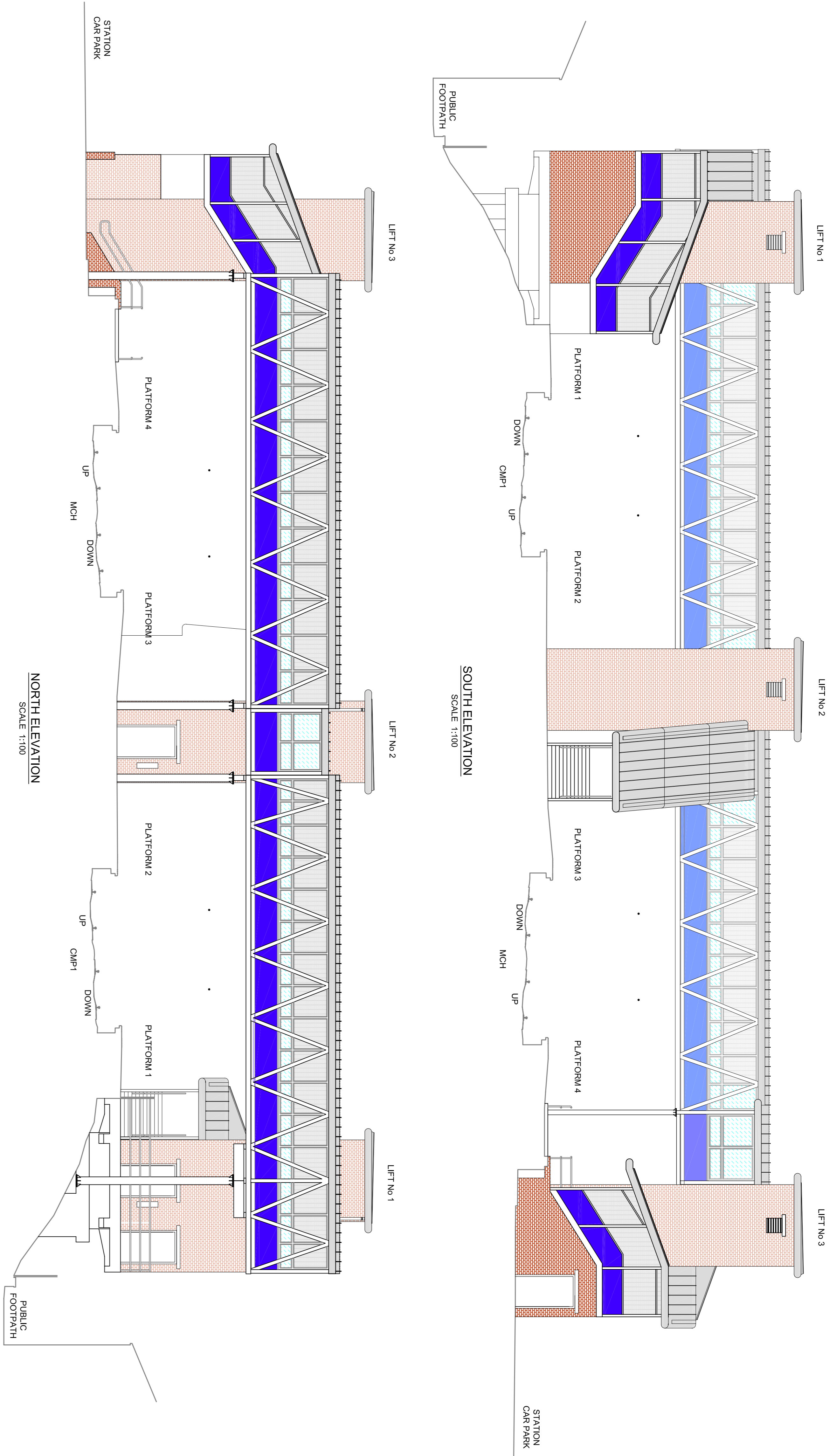
WOODWORK
CORPORATE W20 STEEL WINDOW FRAME BY CRITTALL WITH
11.5mm 5 PL Y OPTILAM GLASS BY PILKINGTON OR SIMILAR
APPROVED

PANELS-
6mm STEEL PLATE PAINTED - COLOUR TO BE CONFIRMED

HANDRAILS-
40mm Ø BY NORMBAU COMBI SYSTEMS OR SIMILAR APPROVED
IN ACCORDANCE WITH SRA CODE OF PRACTICE

FLOOR
SLIP RESISTANT VITRIFIED CLAY TILES ON SAND/CEMENT
SCREED LAID TO CAMBER WITH COLOUR CONTRASTING
EDGING

STAIRS
TREADS TO BE IN DARK GREY WITH WHITE COLOURED
COLOURED NOSINGS
LAST STEPS TO HAVE A YELLOW
LANDINGS TO BE FINISHED IN LIGHT GREY



Rev	Rev	Rev	Rev	Rev	Rev	Rev	Rev
1	09.10.09	RE-SUBMISSION	AT	AP	WM		
0	04.08.09	PLANNING APPLICATION	AT	AP	WM		
		Purpose of revision	Drawn	Checked	Approved		

JACOBS
Fulham House, Ashton Lane, Sale, Manchester, M33 8WP, UK
www.jacobs.com



Project
DDA STEP FREE ACCESS

Drawing title
CHEADLE HULME STATION (CMP1 - 180m 57ch)
PROPOSED FOOTBRIDGE & LIFTS
ELEVATIONS

Drawing status
PLANNING APPLICATION

Scale	Scale	Scale
1:100	Do not scale	
AB No	J26033AO	
Sheet size A1		

Drawing number
STN 029-CHU-013

This drawing is not to be used in whole or part other than for the intended purpose and project as outlined on this drawing. Refer to the contract for full terms and conditions.